

## DRIVING SAFETY

Be aware that you are driving a much larger and heavier vehicle than a car. This will cause the vehicle to react differently from what you may be used to. Failure to follow this safety information may result in an accident, injury or death. **Obey all local, state and federal traffic laws.** Plan your route in advance and know the vehicles dimensions and limitations!

### Refueling (Gasoline and Propane)



Refueling of gasoline and propane releases **highly flammable fumes**. It is therefore mandatory to **TURN OFF** any spark emitting appliances (engine, refrigerator, water heater, furnace, etc.) before fueling. Turn off the engine and the battery disconnect switch by the entry door. **Turn it**



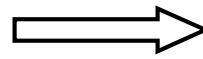
back **ON** after fueling.

### Side winds



## SLOW DOWN!

Use caution or stop if necessary when traveling in high wind conditions. Do not ignore wind warnings on the radio or by traffic officers. When trucks park along the road – stop as well.



### Following distance



Distance in seconds:

5

4

3

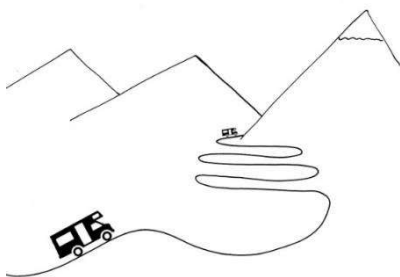
2

1

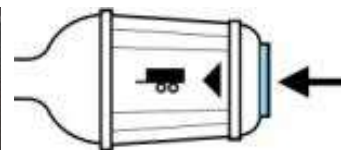


The braking distance is much greater than for a car. **Keep a greater distance to the vehicle in front of you!** If you follow a truck, keep extra distance to reduce risk of damage to the windshield by stones thrown up.

### Mountain driving



When driving in the mountains engage the transmissions tow/ haul mode (separate button). This setting will provide improved pulling power for uphill and engine braking with transmission downshifts for downhill driving. To prevent brake overheating engage the tow/haul mode any time extra braking is required. Higher engine speed and noise are normal in tow/haul mode.



**Adjust your speed according to current road and traffic conditions!**



### Driving at night



If you are driving at night, be aware that in many rural areas (especially in the wide-open areas of the western states) wildlife and in some areas, livestock can be encountered on the roads. **Adjust your speed accordingly.**



## Seat belts



All passengers in the motorhome need to be buckled up. Children - typically up to age 6 or 60 pounds – need to be in a child or booster seat. Consult state regulations – see our website for further details.

**DO NOT get up, cook, shower, use bathroom, walk around or lie on any bed in the motorhome while the vehicle is in motion!**

The safety of yourself and your loved ones is very important.

## GPS – Navigation System

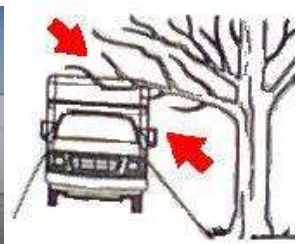
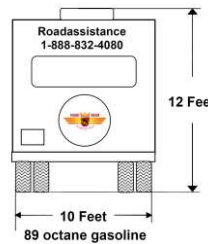
**NEVER operate any GPS device while driving – it is unsafe and dangerous!** Do NOT handle a GPS while the vehicle transmission is in gear – stop and park before operating a GPS. Install and use a GPS device in such a manner that does not cause accidents, personal injury or property damage.



## Overhead obstacles



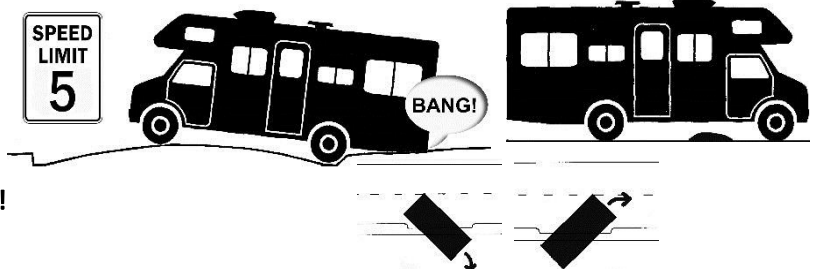
Watch for low overpasses, low-hanging trees, roof edges and road signs. If needed, have a passenger step outside and guide you past the obstacle. Required



vertical clearance for Class C is 12 feet (3.65m) and for Class A is 13 feet (3.95m). Entering parking structures is **PROHIBITED!**

## Driveway entrances and rough road surface

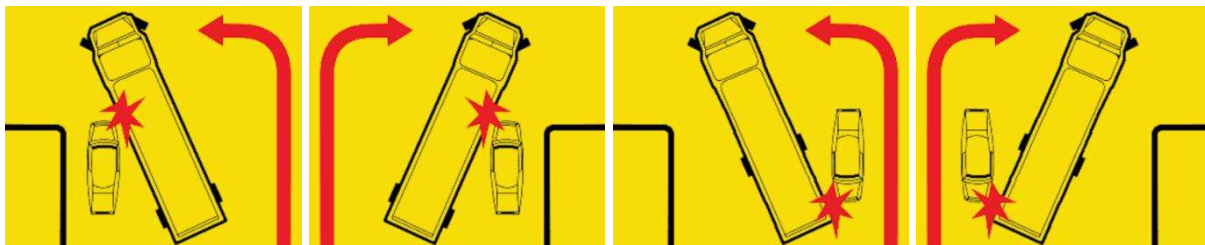
Enter and exit driveways **SLOW** and at an angle – the rear of the motorhome could hit the ground. Drive slowly over ramps, humps, bumps, rough ground and other obstacles of any kind.



**CAUTION - Cabinets could open and objects fall out!**

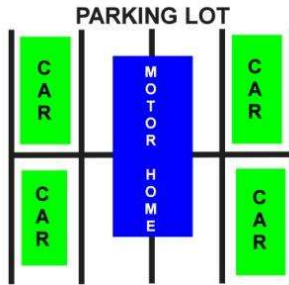
## Maneuvering & parking

Due to the vehicle length, turns need to be executed with extra caution. Turning too soon or too tight may lead to a collision with obstacles. Check your mirrors and drive slow during maneuvering.



The rear of the motorhome swings out wide and clips corners when making turns. Allow for extra room when making turns and parking. Ensure the rear wheels also clear any obstacles.

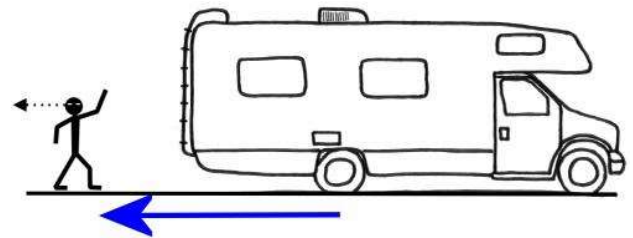
Park in an area with a lot of free space and use more than one parking spot if possible, to ensure other cars do not park too close. You are responsible to pay for all parking spaces used! Parking structures are **PROHIBITED!**



When maneuvering on a campground or parking lot **ALWAYS** get help from a passenger → do not rely on mirrors or backup cameras only! Have someone outside of the motorhome checking for overhead- & side-clearance and obstacles.

### Backing up (Reversing)

**ALWAYS** get help from a passenger while backing up → do not rely on mirrors or backup cameras only! Have someone outside of the motorhome checking for overhead- & side-clearance and obstacles. Even if the motorhome is equipped with a rearview camera - there remain blind spots!



**Damages caused by backing up are gross negligent and NOT covered by the insurance!**

### Tunnels and narrow roads

Drive slowly in tunnels and on narrow mountain roads. Many roads in National and State Parks have been built long before motorhomes were common vehicles. If you slow down when roads narrow, you are more likely able to avoid a mirror-to-mirror or other collisions.



### Mobile phone use while driving



It is not just **unsafe** to use a cell phone while behind the wheel, but in most states it is illegal!

If you have to make a call – pull over or have a passenger make the call.

### Loose items

Secure any loose items or equipment before you drive off. In case of an accident or emergency stop, such a loose item could cause severe injury.



### Break-in and theft



Motorhomes can be a target of thieves. Keep all doors locked while the vehicle is in motion. Do not leave valuables like cameras, computers, etc. laying out where they can be seen. To prevent somebody from hiding in the vehicle, lock all windows and doors; open all curtains and remove the privacy curtain when leaving the motorhome. This helps the police/security personnel to spot suspicious activities.

Should you have fallen victim to a theft or break-in, call the police and get a police report for your insurance.

## Emergency exits

Emergency exits are clearly marked. Special window exits are not to be opened - except in emergencies.

## Hot surfaces

Exhaust ports of furnace, water heater and generator are extremely hot when in use. Do not touch!



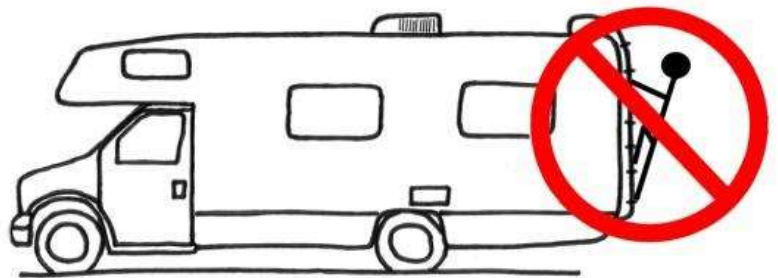
## Slippery when wet

Entry steps and floors can be slippery when wet. Watch your step! Showers are very slippery when wet and not for use while vehicle is in motion.



## Risk of falling

- The cab-over bunk bed is above the cockpit and one could fall out of bed. **ALWAYS use the safety net when small children sleep in the cab-over bunk**
- Watch your step when exiting the vehicle. If the motorhome is equipped with an entry step and it is retracted you could fall and get hurt. Electric step: wait until the step is fully extended before you step outside
- **For safety reasons, renters is not allowed access the roof area!**



## Traffic Rules

There are some unique traffic rules in North America, not commonly encountered elsewhere. Road signs are often spelled out.

## Emergency vehicles

If an emergency vehicle on duty is approaching from either direction with its siren and warning lights on, **you are required to pull over to the right side of the road and stop** until the emergency vehicle has passed.



## Traffic stop



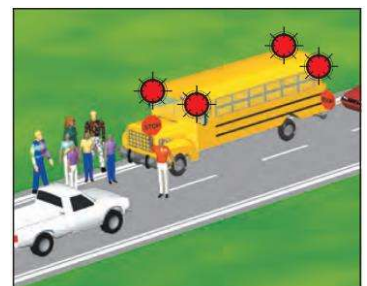
If a police car is following you with its flashing lights on, you have to pull over in a safe place as soon as possible and stop. Do NOT exit the vehicle and keep your hands visible for the officer. **Follow the officer's instructions and answer all questions.**

further instructions.

If you are issued a traffic ticket, call ROAD BEAR RV for

## School bus

If you encounter a stopped school bus with its red lights blinking **you are required to stop fully until the lights are turned off.** You have to stop from either direction if there is no raised center divider between the traffic lanes.

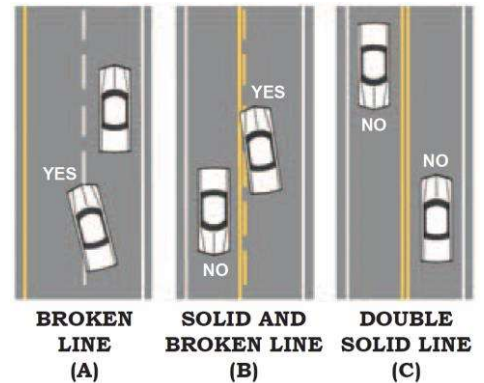
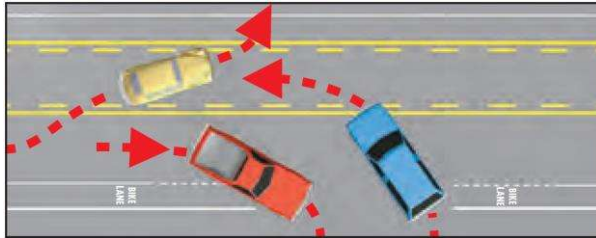


## Traffic lanes

Passing: Only on a broken line on your side of the road. Only pass if there is no oncoming traffic. **The motorhome is heavier, longer and slower than a car and needs more room and time to pass another vehicle.**

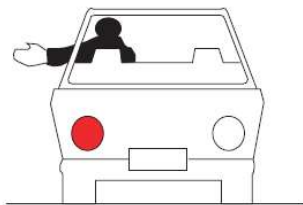
Turning: If there is a center lane, you may use it to make a left-hand turn.

You may also use the center lane when entering traffic.

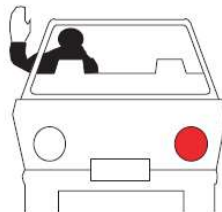


## Hand signals

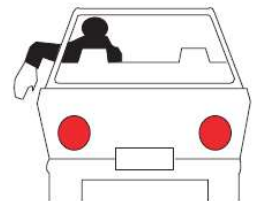
Should the turn or brake lights fail, you are required to signal your intentions by hand.



**LEFT  
TURN**



**RIGHT  
TURN**



**STOPPING  
or SLOWING  
ABRUPTLY**

*These traffic rules are by no means complete and all traffic laws are applicable.*